

Slow Speed Shaft Direction	
Horizontal, slow speed shaft level	H
Vertical, slow speed shaft down	V
Vertical, slow speed shaft up	W
Universal mounting	N

Mounting style	
Foot	H
V flange	V
Flange	F

Type of Input	
Gearmotor	M
With adaptor	JM

Special Specifications	
Standard specification	blank
Special specification	S

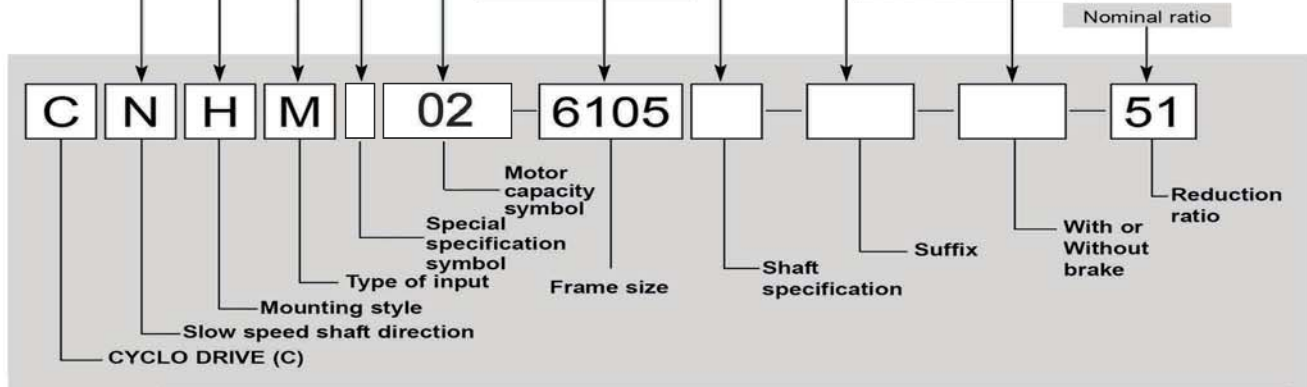
		Motor Capacity Symbol						
4P	Capacity symbol	01	02	03	05	08	1	
	kW (HP)	0.1 (1/8)	0.2 (1/4)	0.25 (1/3)	0.4 (1/2)	0.55 (3/4)	0.75 (1)	
	Capacity symbol	1H	2	3	4	5	8	
	kW (HP)	1.1 (1.5)	1.5 (2)	2.2 (3)	3.0 (4)	3.7 (5)	5.5 (7.5)	
	Capacity symbol	10	15	20	25	30	40	
	kW (HP)	7.5 (10)	11 (15)	15 (20)	18.5 (25)	22 (30)	30 (40)	
6P	Capacity symbol	50	60	75	100			
	kW (HP)	37 (50)	45 (60)	55 (75)	75 (100)			
	Capacity symbol	016	026	036	056	086	16	
	kW (HP)	0.1 (1/8)	0.2 (1/4)	0.25 (1/3)	0.4 (1/2)	0.55 (3/4)	0.75 (1)	
	Capacity symbol	1H6	26	36	46	56	86	
	kW (HP)	1.1 (1.5)	1.5 (2)	2.2 (3)	3.0 (4)	3.7 (5)	5.5 (7.5)	
6P	Capacity symbol	106	156	206	256	306	406	
	kW (HP)	7.5 (10)	11 (15)	15 (20)	18.5 (25)	22 (30)	30 (40)	
	Capacity symbol	506	606	756	1006	1256	1506	
	kW (HP)	37 (50)	45 (60)	55 (75)	75 (100)	90 (125)	110 (150)	
	Capacity symbol	1756						
	kW (HP)	132 (175)						

Shaft specification	
Metric JIS (Standard)	-
Inch size	Y
Metric DIN	G

Suffix		
Standard	-	Low Backlash
Light Heavy Radial	R1	With AF (inverter) motor
High Cap. Brg. Ductile Casing	R2	Servo Motor
Baseplate	BP	DC Motor
HH Type Ceiling	H1	High Efficiency Motor
Modification Left Wall	H2	Torque Limiter
Modification Right Wall	H3	

With or Without Brake	
Without brake	-
With brake	B

Frame size
(Refer to Selection
Tables starting from
page B-13.)

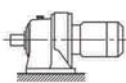


Product and Nomenclature Symbol Examples (Gearmotor)

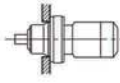
Standard and various application products of CYCLO GEARMOTOR are classified by their nomenclature symbol as below. Refer to specific catalogs or consult us for details on our application products.

CYCLO® GEARMOTORS

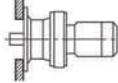
CHHM
(CNHM)



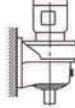
CHFM
(CNFM)



CHVM
(CNVM)



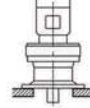
CVHM
(CNHM)



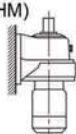
CVFM
(CNFM)



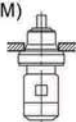
CVVM
(CNVM)



CWHM
(CNHM)



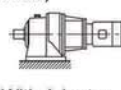
CWFM
(CNFM)



CWVM
(CNVM)

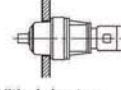


CHHJM
(CNHJM)



With Adaptor

CHFJM
(CNFJM)



With Adaptor

CVVJM
(CNVJM)



With Adaptor

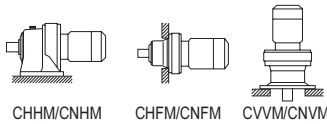
Selection Tables Gearmotors #CNHM02, #CHHM02, #CNVM02, #CVVM02

0.1 kW		n ₁ : Motor Speed				CHHM/CNHM		CHFM/CNFM		CVVM/CNVM					
		Hz		50Hz								60Hz			
		P	r/min	4	6							4	6		
n ₂	r/min	N·m	kgf·m	N	kgf	N	kgf	Input Capacity Symbol	Frame Size	Reduction Ratio	Page of Dimension Sheet				
0.476	150	15.3	3310	338	*1	0.575	150	15.3	3310	338	*1	01 - 6090DA - 3045	B-108	B-124	B-143
	192	19.6	3240	330	*1		192	19.6	3240	330	*1	01 - 6095DA - 3045	B-108	B-124	B-143
	250	25.5	5400	550	*1		250	25.5	5400	550	*1	01 - 6100DA - 3045	B-108	B-124	B-143
	300	30.6	4780	488	*1		300	30.6	4780	488	*1	01 - 6105DA - 3045	B-108	B-124	B-143
	525	53.5	9780	997	*1		525	53.5	9780	997	*1	01 - 6120DA - 3045	B-108	B-124	B-143
0.417	146	14.9	3300	336	*1	0.503	146	14.9	3300	336	*1	01 - 6090DA - 3481	B-108	B-124	B-143
	250	25.5	5400	550	*1		250	25.5	5400	550	*1	01 - 6100DA - 3481	B-108	B-124	B-143
	296	30.2	5090	519	*1		296	30.2	5090	519	*1	01 - 6105DA - 3481	B-108	B-124	B-143
	525	53.5	9810	1000	*1		525	53.5	9810	1000	*1	01 - 6120DA - 3481	B-108	B-124	B-143
	630	64.2	9810	1000	*1		630	64.2	9810	1000	*1	01 - 6125DA - 3481	B-108	B-124	B-143
0.327	150	15.3	3310	338	*1	0.394	150	15.3	3310	338	*1	01 - 6090DA - 4437	B-108	B-124	B-143
	192	19.6	3240	330	*1		192	19.6	3240	330	*1	01 - 6095DA - 4437	B-108	B-124	B-143
	250	25.5	5400	550	*1		250	25.5	5400	550	*1	01 - 6100DA - 4437	B-108	B-124	B-143
	300	30.6	4780	488	*1		300	30.6	4780	488	*1	01 - 6105DA - 4437	B-108	B-124	B-143
	525	53.5	9780	997	*1		525	53.5	9780	997	*1	01 - 6120DA - 4437	B-108	B-124	B-143
0.282	150	15.3	3310	338	*1	0.341	150	15.3	3310	338	*1	01 - 6090DA - 5133	B-108	B-124	B-143
	192	19.6	3240	330	*1		192	19.6	3240	330	*1	01 - 6095DA - 5133	B-108	B-124	B-143
	250	25.5	5400	550	*1		250	25.5	5400	550	*1	01 - 6100DA - 5133	B-108	B-124	B-143
	300	30.6	4780	488	*1		300	30.6	4780	488	*1	01 - 6105DA - 5133	B-108	B-124	B-143
	525	53.5	9780	997	*1		525	53.5	9780	997	*1	01 - 6120DA - 5133	B-108	B-124	B-143
0.235	525	53.5	9780	997	*1	0.283	525	53.5	9780	997	*1	01 - 6120DB - 6177	B-108	B-124	B-143
	630	64.2	9560	974	*1		630	64.2	9560	974	*1	01 - 6125DB - 6177	B-108	B-124	B-143
0.192	525	53.5	9780	997	*1	0.231	525	53.5	9780	997	*1	01 - 6120DB - 7569	B-108	B-124	B-143
	630	64.2	9560	974	*1		630	64.2	9560	974	*1	01 - 6125DB - 7569	B-108	B-124	B-143

0.2 kW		n ₁ : Motor Speed				CHHM/CNHM		CHFM/CNFM		CVVM/CNVM					
		Hz		50Hz								60Hz			
		P	r/min	4	6							4	6		
n ₂	r/min	N·m	kgf·m	N	kgf	N	kgf	Input Capacity Symbol	Frame Size	Reduction Ratio	Page of Dimension Sheet				
242	7.51	0.765	798	81.4	1.00	292	6.22	0.634	751	76.6	1.00	02 - 6060 - 6	B-100	B-116	B-135
			798	81.4	1.43				751	76.6	1.43	02 - 6065 - 6	B-100	B-116	B-135
			1390	142	1.74				1310	134	1.74	02 - 6070 - 6	B-100	B-116	B-135
			1390	142	2.04				1310	134	2.04	02 - 6075 - 6	B-100	B-116	B-135
			1930	197	2.96				1820	185	2.96	02 - 6080 - 6	B-100	B-116	B-135
181	10.0	1.02	912	93.0	1.00	219	8.29	0.846	859	87.5	1.00	02 - 6060 - 8	B-100	B-116	B-135
			912	93	1.43				859	88	1.43	02 - 6065 - 8	B-100	B-116	B-135
			1540	157	1.74				1450	148	1.74	02 - 6070 - 8	B-100	B-116	B-135
			1540	157	2.04				1450	148	2.04	02 - 6075 - 8	B-100	B-116	B-135
			2100	214	2.96				1970	201	2.96	02 - 6080 - 8	B-100	B-116	B-135

1. Combinations in **bold** are the recommended models for operations for 10 hours/day with uniform load (service factor is about 1.0 for motor rating at 50Hz).
2. Motor slippage may affect n₁ and n₂. Refer to technical data for details.
3. CNHM, CHHM, CNFM, CHFM, CNVM, and CVVM indicate types. Refer to page B-10 for details.
4. Lubrication method is different for each model. Refer to "Lubrication" section in page F-4~F-5 for details.
5. "6" at the end of "input capacity symbol" indicates models with 6P motor. Other models come with 4P motor.

Selection Tables Gearmotors #CNHM02, #CHHM02, #CNVM02, #CVVM02



0.2 kW	Hz		50Hz		60Hz	
	P		4	6	4	6
	n ₁	r/min	1450	980	1750	1165

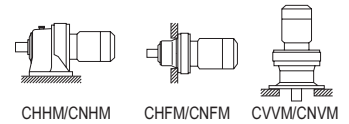
n₁: Motor Speed

50Hz					60Hz					Nomenclature			Page of Dimension Sheet						
Output Speed n ₂ r/min	Output Torque Tout N·m kgf·m		Allowable Radial Load Pro N kgf		SF	Output Speed n ₂ r/min	Output Torque Tout N·m kgf·m		Allowable Radial Load Pro N kgf		SF	Input Capacity Symbol	Frame Size	Reduction Ratio	CNHM	CNFM	CNVM		
															CHHM	CHFM	CVVM		
132	13.8	1.40	1180	120	1.00	159	11.4	1.16	1170	119	1.00	02 -	6060	- 11	B-100	B-116	B-135		
			1180	120	1.43				1170	119	1.43				6065	- 11	B-100	B-116	B-135
			1730	176	1.74				1630	166	1.74				6070	- 11	B-100	B-116	B-135
			1730	176	2.04				1630	166	2.04				6075	- 11	B-100	B-116	B-135
			2320	236	2.96				2180	222	2.96				6080	- 11	B-100	B-116	B-135
112	16.3	1.66	1180	120	1.00	135	13.5	1.37	1180	120	1.00	02 -	6060	- 13	B-100	B-116	B-135		
			1180	120	1.43				1180	120	1.43				6065	- 13	B-100	B-116	B-135
			1770	180	1.74				1720	175	1.74				6070	- 13	B-100	B-116	B-135
			1770	180	2.04				1720	175	2.04				6075	- 13	B-100	B-116	B-135
			2500	254	2.96				2350	239	2.96				6080	- 13	B-100	B-116	B-135
96.7	18.8	1.91	1180	120	1.00	117	15.6	1.59	1180	120	1.00	02 -	6060	- 15	B-100	B-116	B-135		
			1180	120	1.43				1180	120	1.43				6065	- 15	B-100	B-116	B-135
			1770	180	1.74				1730	176	1.74				6070	- 15	B-100	B-116	B-135
			1770	180	2.04				1730	176	2.04				6075	- 15	B-100	B-116	B-135
			2560	261	2.96				2420	247	2.96				6080	- 15	B-100	B-116	B-135
85.3	21.3	2.17	1180	120	1.00	103	17.6	1.80	1180	120	1.00	02 -	6060	- 17	B-100	B-116	B-135		
			1180	120	1.41				1180	120	1.43				6065	- 17	B-100	B-116	B-135
			1770	180	1.74				1770	180	1.74				6070	- 17	B-100	B-116	B-135
			1770	180	2.04				1770	180	2.04				6075	- 17	B-100	B-116	B-135
			2560	261	2.96				2540	259	2.96				6080	- 17	B-100	B-116	B-135
69.0	26.3	2.68	1180	120	1.14	83.3	21.8	2.22	1180	120	1.17	02 -	6065	- 21	B-100	B-116	B-135		
			1770	180	1.60				1770	180	1.60				6070	- 21	B-100	B-116	B-135
			1770	180	2.04				1770	180	2.04				6075	- 21	B-100	B-116	B-135
			2560	261	2.39				2480	253	2.39				6080	- 21	B-100	B-116	B-135
			2560	261	2.75				2480	253	2.75				6085	- 21	B-100	B-116	B-135
58.0	31.3	3.19	1180	120	0.83	70.0	25.9	2.64	1180	120	0.83	02 -	6065	- 25	B-100	B-116	B-135		
			1770	180	1.15				1770	180	1.15				6070	- 25	B-100	B-116	B-135
			1770	180	1.47				1770	180	1.47				6075	- 25	B-100	B-116	B-135
			2560	261	1.70				2550	260	1.70				6080	- 25	B-100	B-116	B-135
			2560	261	2.38				2550	260	2.38				6085	- 25	B-100	B-116	B-135
50.0	36.3	3.70	1180	120	0.83	60.3	30.1	3.07	1180	120	0.83	02 -	6065	- 29	B-100	B-116	B-135		
			1770	180	1.13				1770	180	1.13				6070	- 29	B-100	B-116	B-135
			1770	180	1.43				1770	180	1.43				6075	- 29	B-100	B-116	B-135
			2560	261	1.70				2560	261	1.70				6080	- 29	B-100	B-116	B-135
			2560	261	2.34				2560	261	2.34				6085	- 29	B-100	B-116	B-135
41.4	43.8	4.46	1770	180	1.03	50.0	36.3	3.70	1770	180	1.06	02 -	6070	- 35	B-100	B-116	B-135		
			1770	180	1.36				1770	180	1.40				6075	- 35	B-100	B-116	B-135
			2560	261	1.45				2560	261	1.65				6080	- 35	B-100	B-116	B-135
			2560	261	1.64				2560	261	1.86				6085	- 35	B-100	B-116	B-135
			3340	340	3.06				3340	340	3.06				6090	- 35	B-100	B-116	B-135
33.7	53.8	5.49	1770	180	1.12	40.7	44.6	4.54	1770	180	1.13	02 -	6075	- 43	B-100	B-116	B-135		
			2560	261	1.25				2560	261	1.25				6080	- 43	B-100	B-116	B-135
			2560	261	1.47				2560	261	1.47				6085	- 43	B-100	B-116	B-135
			3340	340	2.18				3340	340	2.18				6090	- 43	B-100	B-116	B-135
			2560	261	1.21				2560	261	1.21				6085	- 51	B-100	B-116	B-135
28.4	63.8	6.51	3340	340	1.66	34.3	52.9	5.39	3340	340	1.66	02 -	6090	- 51	B-100	B-116	B-135		
			3340	340	2.04				3340	340	2.11				6095	- 51	B-100	B-116	B-135
			5400	550	2.80				5400	550	2.80				6100	- 51	B-101	B-117	B-136
			2560	261	1.17				2560	261	1.17				6085	- 59	B-100	B-116	B-135
			3340	340	1.55				3340	340	1.55				6090	- 59	B-100	B-116	B-135
24.6	73.8	7.53	3340	340	1.68	29.7	61.2	6.24	3340	340	1.87	02 -	6095	- 59	B-100	B-116	B-135		
			5400	550	2.58				5400	550	2.58				6100	- 59	B-101	B-117	B-136
			2380	243	0.83				2510	256	0.94				6085	- 71	B-100	B-116	B-135
			3340	340	1.26				3340	340	1.26				6090	- 71	B-100	B-116	B-135
			3340	340	1.39				3340	340	1.51				6095	- 71	B-100	B-116	B-135
20.4	88.8	9.06	5400	550	2.18	24.6	73.6	7.50	5400	550	2.18	02 -	6100	- 71	B-101	B-117	B-136		
			5400	550	2.53				5400	550	2.81				6105	- 71	B-101	B-117	B-136

- "*2" indicate models manufactured with reducer and motor separately mounted on a common baseplate (horizontal shaft direction) or on an adaptor (vertical shaft direction). Consult us for details, including dimensions.
- Allowable radial load (Pro) is the value at the midpoint of the slow speed shaft.
- "*3" indicate models with reduction ratios equal to nominal ratio. Refer to Table A-3 "6000SK Series (Actual Reduction Ratio)" on page A-4 for actual reduction ratio. Indicated reduction ratio is the same as actual reduction ratio for other models.
- Maintain torque load during operation within "Output torque" in the table for models with "*" in the SF column. They cannot be operated with 100% motor rating.

Selection Tables Gearmotors #CNHM02, #CHHM02, #CNVM02, #CVVM02

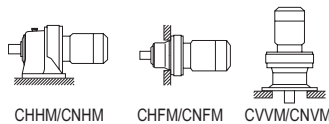
0.2 kW	Hz		50Hz		60Hz	
	P		4	6	4	6
	n ₁	r/min	1450	980	1750	1165



50Hz						60Hz						Nomenclature			Page of Dimension Sheet			
Output Speed n ₂	Output Torque Tout		Allowable Radial Load Pro		SF	Output Speed n ₂	Output Torque Tout		Allowable Radial Load Pro		SF	Input Capacity Symbol	Frame Size	Reduction Ratio	CNHM	CNFM	CNVM	
r/min	N·m	kgf·m	N	kgf		r/min	N·m	kgf·m	N	kgf					CHHM	CHFM	CVVM	
16.7	109	11.1	3340	340	1.06	20.1	90.2	9.20	3340	340	1.06	02 -	6090	-	87	B-100	B-116	B-135
			3340	340	1.32				3340	340	1.51	02 -	6095	-	87	B-100	B-116	B-135
			5400	550	2.17				5400	550	2.17	02 -	6100	-	87	B-101	B-117	B-136
			5400	550	2.52				5400	550	2.83	02 -	6105	-	87	B-101	B-117	B-136
13.9	123	12.6	3340	340	1.22	16.8	102	10.4	3340	340	1.47	02 -	6075DA	-	104	B-108	B-124	B-143
			3340	340	1.47				3340	340	1.77	02 -	6090DA	-	104	B-108	B-124	B-143
			5400	550	2.03				5400	550	2.15	02 -	6095DA	-	104	B-108	B-124	B-143
			5400	550	2.15				5400	550	2.15	02 -	6100DA	-	104	B-108	B-124	B-143
12.2	149.0	15.2	5400	550	1.05	14.7	123	12.6	5400	550	1.05	02 -	6100	-	119	B-101	B-117	B-136
			5400	550	1.43				5400	550	1.43	02 -	6105	-	119	B-101	B-117	B-136
			3340	340	1.05				3340	340	1.26	02 -	6090DA	-	121	B-108	B-124	B-143
			3340	340	1.12				3340	340	1.35	02 -	6095DA	-	121	B-108	B-124	B-143
12.0	143	14.6	5400	550	1.74	14.5	119	12.1	5400	550	2.10	02 -	6100DA	-	121	B-108	B-124	B-143
			5400	550	2.14				5400	550	2.15	02 -	6105DA	-	121	B-108	B-124	B-143
			9810	1000	2.15				9810	1000	2.15	02 -	6105DA	-	121	B-108	B-124	B-143
			9810	1000	2.15				9810	1000	2.15	02 -	6120DA	-	121	B-108	B-124	B-143
10.1	170	17.3	3340	340	1.08	12.2	140	14.3	3340	340	1.30	02 -	6095DA	-	143	B-108	B-124	B-143
			5400	550	1.47				5400	550	1.78	02 -	6100DA	-	143	B-108	B-124	B-143
			5400	550	1.77				5400	550	2.14	02 -	6105DA	-	143	B-108	B-124	B-143
			9810	1000	2.15				9810	1000	2.15	02 -	6120DA	-	143	B-108	B-124	B-143
8.79	196	19.9	3340	340	1.02	10.6	162	16.5	3340	340	1.23	02 -	6090DA	-	165	B-108	B-124	B-143
			5400	550	1.28				5400	550	1.54	02 -	6095DA	-	165	B-108	B-124	B-143
			5400	550	1.53				5400	550	1.85	02 -	6100DA	-	165	B-108	B-124	B-143
			9810	1000	2.15				9810	1000	2.15	02 -	6105DA	-	165	B-108	B-124	B-143
7.44	231	23.6	3340	340	1.02	8.97	192	19.5	3340	340	1.23	02 -	6120DA	-	165	B-108	B-124	B-143
			5400	550	1.08				5400	550	1.04	02 -	6120DA	-	165	B-108	B-124	B-143
			5400	550	1.30				5400	550	1.31	02 -	6090DA	-	195	B-108	B-124	B-143
			9810	1000	2.15				9810	1000	1.04	02 -	6095DA	-	195	B-108	B-124	B-143
6.28	274	27.9	9810	1000	1.91	7.58	227	23.1	9810	1000	2.30	02 -	6100DA	-	195	B-108	B-124	B-143
			9810	1000	1.91				9810	1000	2.30	02 -	6100DA	-	195	B-108	B-124	B-143
			9810	1000	2.15				9810	1000	2.15	02 -	6105DA	-	195	B-108	B-124	B-143
			9810	1000	2.30				9810	1000	2.15	02 -	6120DA	-	195	B-108	B-124	B-143
5.31	324	33.0	14700	1500	2.85	6.41	268	27.3	14700	1500	3.44	02 -	6125DB	-	195	B-108	B-124	B-143
			14700	1500	2.85				14700	1500	3.44	02 -	6125DB	-	195	B-108	B-124	B-143
			14700	1500	2.85				14700	1500	3.44	02 -	6125DB	-	195	B-108	B-124	B-143
			14700	1500	2.85				14700	1500	3.44	02 -	6125DB	-	195	B-108	B-124	B-143

1. Combinations in **bold** are the recommended models for operations for 10 hours/day with uniform load (service factor is about 1.0 for motor rating at 50Hz).
2. Motor slippage may affect n₁ and n₂. Refer to technical data for details.
3. CNHM, CHHM, CNFM, CHFM, CNVM, and CVVM indicate types. Refer to page B-10 for details.
4. Lubrication method is different for each model. Refer to "Lubrication" section in page F-4~F-5 for details.
5. "6" at the end of "input capacity symbol" indicates models with 6P motor. Other models come with 4P motor.

Selection Tables Gearmotors #CNHM02, #CHHM02, #CNVM02, #CVVM02



0.2 kW	Hz		50Hz		60Hz	
	P		4	6	4	6
	n ₁	r/min	1450	980	1750	1165

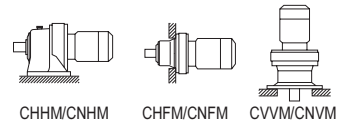
n₁: Motor Speed

50Hz					60Hz					Nomenclature			Page of Dimension Sheet					
Output Speed n ₂ r/min	Output Torque Tout		Allowable Radial Load Pro		SF	Output Speed n ₂ r/min	Output Torque Tout		Allowable Radial Load Pro		SF	Input Capacity Symbol	Frame Size	Reduction Ratio	CNHM	CNFM	CNVM	
	N-m	kgf-m	N	kgf			N-m	kgf-m	N	kgf								CHHM
4.55	200	20.4	3200	326	*1	4.55	200	20.4	3200	326	*1	02 - 6095DA	- 319	B-108	B-124	B-143		
	250	25.5	5400	550	*1		250	25.5	5400	550	*1	02 - 6100DA	- 319	B-108	B-124	B-143		
	300	30.6	5400	550	*1		300	30.6	5400	550	*1	02 - 6105DA	- 319	B-108	B-124	B-143		
	378	38.6	9810	1000	1.38		313	31.9	9810	1000	1.66	02 - 6120DA	- 319	B-108	B-124	B-143		
			9810	1000	1.67				9810	1000	2.01	02 - 6125DA	- 319	B-108	B-124	B-143		
			14700	1500	2.06				14700	1500	2.15	02 - 6130DA	- 319	B-109	B-125	B-144		
			14700	1500	2.06				14700	1500	2.49	02 - 6130DB	- 319	B-109	B-125	B-144		
			14700	1500	2.15				14700	1500	2.15	02 - 6135DA	- 319	B-109	B-125	B-144		
			14700	1500	2.49				14700	1500	3.00	02 - 6135DB	- 319	B-109	B-125	B-144		
	3.85	200	20.4	3200	326		*1	3.85	200	20.4	3200	326	*1	02 - 6095DA	- 377	B-108	B-124	B-143
250		25.5	5400	550	*1	250	25.5		5400	550	*1	02 - 6100DA	- 377	B-108	B-124	B-143		
300		30.6	5400	550	*1	300	30.6		5400	550	*1	02 - 6105DA	- 377	B-108	B-124	B-143		
447		45.6	9810	1000	1.16	370	37.7		9810	1000	1.40	02 - 6120DA	- 377	B-108	B-124	B-143		
			9810	1000	1.41				9810	1000	1.70	02 - 6125DA	- 377	B-108	B-124	B-143		
			14700	1500	1.75				14700	1500	2.11	02 - 6130DA	- 377	B-109	B-125	B-144		
			14700	1500	2.10				14700	1500	2.15	02 - 6135DA	- 377	B-109	B-125	B-144		
			14700	1500	2.10				14700	1500	2.54	02 - 6135DB	- 377	B-109	B-125	B-144		
			16000	1630	2.15				16000	1630	2.15	02 - 6140DA	- 377	B-109	B-125	B-144		
			16000	1630	2.74				16000	1630	3.31	02 - 6140DB	- 377	B-109	B-125	B-144		
3.07	250	25.5	5400	550	*1	3.07	250	25.5	5400	550	*1	02 - 6100DA	- 473	B-108	B-124	B-143		
	300	30.6	5400	550	*1		300	30.6	5400	550	*1	02 - 6105DA	- 473	B-108	B-124	B-143		
	561	57.2	9810	1000	1.12		465	47.4	9810	1000	1.36	02 - 6125DA	- 473	B-108	B-124	B-143		
			14700	1500	1.39				14700	1500	1.68	02 - 6130DA	- 473	B-109	B-125	B-144		
			14700	1500	1.68				14700	1500	2.02	02 - 6135DA	- 473	B-109	B-125	B-144		
			16000	1630	2.15				16000	1630	2.15	02 - 6140DA	- 473	B-109	B-125	B-144		
			16000	1630	2.18				16000	1630	2.64	02 - 6140DB	- 473	B-109	B-125	B-144		
			16000	1630	2.44				16000	1630	2.95	02 - 6145DB	- 473	B-109	B-125	B-144		
	2.59	300	30.6	5400	550		*1	2.59	300	30.6	5400	550	*1	02 - 6105DA	- 559	B-108	B-124	B-143
		525	53.5	9810	1000		*1		525	53.5	9810	1000	*1	02 - 6120DA	- 559	B-108	B-124	B-143
663		67.6	9810	1000	0.95	549	56.0		9810	1000	1.15	02 - 6125DA	- 559	B-108	B-124	B-143		
			14700	1500	1.18				14700	1500	1.42	02 - 6130DA	- 559	B-109	B-125	B-144		
			14700	1500	1.42				14700	1500	1.71	02 - 6135DA	- 559	B-109	B-125	B-144		
			16000	1630	1.85				16000	1630	2.15	02 - 6140DA	- 559	B-109	B-125	B-144		
			16000	1630	1.85				16000	1630	2.23	02 - 6140DB	- 559	B-109	B-125	B-144		
			16000	1630	2.07				16000	1630	2.15	02 - 6145DA	- 559	B-109	B-125	B-144		
			16000	1630	2.07				16000	1630	2.50	02 - 6145DB	- 559	B-109	B-125	B-144		
2.23		525	53.5	9810	1000	*1	2.23		525	53.5	9810	1000	*1	02 - 6120DA	- 649	B-108	B-124	B-143
	630	64.2	9810	1000	*1	630		64.2	9810	1000	*1	02 - 6125DA	- 649	B-108	B-124	B-143		
	769	78.4	9810	1000	0.82	638		65.0	9810	1000	0.98	02 - 6125DA	- 649	B-108	B-124	B-143		
			14700	1500	1.19				14700	1500	1.43	02 - 6130DA	- 649	B-109	B-125	B-144		
			14700	1500	1.36				14700	1500	1.65	02 - 6135DA	- 649	B-109	B-125	B-144		
			16000	1630	1.59				16000	1630	1.92	02 - 6140DA	- 649	B-109	B-125	B-144		
			16000	1630	1.78				16000	1630	2.15	02 - 6145DA	- 649	B-109	B-125	B-144		
	1.98	525	53.5	9810	1000	*1		1.98	525	53.5	9810	1000	*1	02 - 6120DA	- 731	B-108	B-124	B-143
		630	64.2	9810	1000	*1			630	64.2	9810	1000	*1	02 - 6125DA	- 731	B-108	B-124	B-143
		867	88.3	14700	1500	1.08			718	73.2	14700	1500	1.31	02 - 6135DA	- 731	B-109	B-125	B-144
16000				1630	1.41	16000	1630				1.71	02 - 6140DA	- 731	B-109	B-125	B-144		
16000				1630	1.58	16000	1630				1.91	02 - 6145DA	- 731	B-109	B-125	B-144		
1.72		520	53.0	9810	1000	*1	1.72		520	53.0	9810	1000	*1	02 - 6120DA	- 841	B-108	B-124	B-143
		630	64.2	9810	1000	*1			630	64.2	9810	1000	*1	02 - 6125DA	- 841	B-108	B-124	B-143
		780	79.5	14700	1500	*1			780	79.5	14700	1500	*1	02 - 6130DA	- 841	B-109	B-125	B-144
		997	102	14700	1500	0.94			826	84.2	14700	1500	1.14	02 - 6135DA	- 841	B-109	B-125	B-144
	16000			1630	1.23	16000		1630			1.48	02 - 6140DA	- 841	B-109	B-125	B-144		
	16000			1630	1.37	16000		1630			1.51	02 - 6145DA	- 841	B-109	B-125	B-144		

- "*2" indicate models manufactured with reducer and motor separately mounted on a common baseplate (horizontal shaft direction) or on an adaptor (vertical shaft direction). Consult us for details, including dimensions.
- Allowable radial load (Pro) is the value at the midpoint of the slow speed shaft.
- "*3" indicate models with reduction ratios equal to nominal ratio. Refer to Table A-3 "6000SK Series (Actual Reduction Ratio)" on page A-4 for actual reduction ratio. Indicated reduction ratio is the same as actual reduction ratio for other models.
- Maintain torque load during operation within "Output torque" in the table for models with "*" in the SF column. They cannot be operated with 100% motor rating.

Selection Tables Gearmotors #CNHM02, #CHHM02, #CNVM02, #CVVM02

0.2 kW		n ₁ : Motor Speed														
		Hz		50Hz		60Hz										
		P		4	6	4	6									
n ₁	r/min	1450	980	1750	1165											
Output Speed n ₂	50Hz		60Hz				Nomenclature			Page of Dimension Sheet						
	Output Torque Tout	Allowable Radial Load Pro	SF	Output Speed n ₂	Output Torque Tout	Allowable Radial Load Pro	SF	Input Capacity Symbol	Frame Size	Reduction Ratio	CNHM	CNFM	CNVM			
r/min	N·m	kgf·m	N	kgf	r/min	N·m	kgf·m	N	kgf		CHHM	CHFM	CVVM			
1.45	525	53.5	9810	1000	*1	1.74	525	53.5	9810	1000	*1	02 - 6120DA	- 1003	B-108	B-124	B-143
	630	64.2	9810	1000	*1		630	64.2	9810	1000	*1	02 - 6125DA	- 1003	B-108	B-124	B-143
1.16	912	93.0	14700	1500	*1	1.40	912	93.0	14700	1500	*1	02 - 6130DA	- 1003	B-109	B-125	B-144
			14700	1500	0.88				14700	1500	1.07	02 - 6135DA	- 1003	B-109	B-125	B-144
	1190	121	16000	1630	1.03		985	100	16000	1630	1.24	02 - 6140DA	- 1003	B-109	B-125	B-144
			16000	1630	1.15				16000	1630	1.39	02 - 6145DA	- 1003	B-109	B-125	B-144
0.980	630	64.2	9810	1000	*1	1.18	630	64.2	9810	1000	*1	02 - 6125DA	- 1247	B-108	B-124	B-143
	780	79.5	14700	1500	*1		780	79.5	14700	1500	*1	02 - 6130DA	- 1247	B-109	B-125	B-144
0.784	940	95.8	14700	1500	*1	0.946	940	95.8	14700	1500	*1	02 - 6135DA	- 1247	B-109	B-125	B-144
	1230	125	16000	1630	*1		1230	125	16000	1630	*1	02 - 6140DA	- 1247	B-109	B-125	B-144
	1480	151	15200	1540	0.93		1220	125	16000	1630	1.12	02 - 6145DA	- 1247	B-109	B-125	B-144
0.702	848	86.5	14700	1500	*1	0.847	848	86.5	14700	1500	*1	02 - 6130DA	- 1479	B-109	B-125	B-144
	979	99.8	14700	1500	*1		979	99.8	14700	1500	*1	02 - 6135DA	- 1479	B-109	B-125	B-144
0.572	1230	125	16000	1630	*1	0.690	1230	125	16000	1630	*1	02 - 6140DA	- 1479	B-109	B-125	B-144
	1250	127	16000	1630	*1		1250	127	16000	1630	*1	02 - 6145DA	- 1479	B-109	B-125	B-144
0.476	780	79.5	14700	1500	*1	0.575	780	79.5	14700	1500	*1	02 - 6130DA	- 1849	B-109	B-125	B-144
	940	95.8	14700	1500	*1		940	95.8	14700	1500	*1	02 - 6135DA	- 1849	B-109	B-125	B-144
0.417	1230	125	16000	1630	*1	0.503	1230	125	16000	1630	*1	02 - 6140DA	- 1849	B-109	B-125	B-144
	1370	140	15700	1600	*1		1370	140	15700	1600	*1	02 - 6145DA	- 1849	B-109	B-125	B-144
	1740	177	22100	2250	*1		1740	177	22100	2250	*1	02 - 6160DA	- 1849	B-110	B-126	B-145
0.702	912	93.0	14700	1500	*1	0.847	912	93.0	14700	1500	*1	02 - 6130DA	- 2065	B-109	B-125	B-144
	1050	107	14700	1500	*1		1050	107	14700	1500	*1	02 - 6135DA	- 2065	B-109	B-125	B-144
0.572	1230	125	16000	1630	*1	0.690	1230	125	16000	1630	*1	02 - 6140DA	- 2065	B-109	B-125	B-144
	1370	140	16000	1630	*1		1370	140	16000	1630	*1	02 - 6145DA	- 2065	B-109	B-125	B-144
0.476	1760	179	22100	2250	*1	0.575	1760	179	22100	2250	*1	02 - 6160DA	- 2065	B-110	B-126	B-145
	2450	250	22100	2250	0.86		2030	207	22100	2250	1.04	02 - 6165DA	- 2065	B-110	B-126	B-145
0.417	912	93.0	14700	1500	*1	0.503	912	93.0	14700	1500	*1	02 - 6130DA	- 2537	B-109	B-125	B-144
	1050	107	14700	1500	*1		1050	107	14700	1500	*1	02 - 6135DA	- 2537	B-109	B-125	B-144
0.476	1230	125	16000	1630	*1	0.575	1230	125	16000	1630	*1	02 - 6140DA	- 2537	B-109	B-125	B-144
	1370	140	16000	1630	*1		1370	140	16000	1630	*1	02 - 6145DA	- 2537	B-109	B-125	B-144
0.417	1760	179	22100	2250	*1	0.503	1760	179	22100	2250	*1	02 - 6160DA	- 2537	B-110	B-126	B-145
	2100	214	22100	2250	*1		2100	214	22100	2250	*1	02 - 6165DA	- 2537	B-110	B-126	B-145
0.417	848	86.5	14700	1500	*1	0.575	848	86.5	14700	1500	*1	02 - 6130DA	- 3045	B-109	B-125	B-144
	979	99.8	14700	1500	*1		979	99.8	14700	1500	*1	02 - 6135DA	- 3045	B-109	B-125	B-144
0.417	1230	125	16000	1630	*1	0.503	1230	125	16000	1630	*1	02 - 6140DA	- 3045	B-109	B-125	B-144
	1250	127	16000	1630	*1		1250	127	16000	1630	*1	02 - 6145DA	- 3045	B-109	B-125	B-144
0.417	1760	179	22100	2250	*1	0.503	1760	179	22100	2250	*1	02 - 6160DA	- 3045	B-110	B-126	B-145
	2050	209	21800	2220	*1		2050	209	21800	2220	*1	02 - 6165DA	- 3045	B-110	B-126	B-145
0.417	2530	258	29500	3010	*1	0.503	2530	258	29500	3010	*1	02 - 6170DA	- 3045	B-110	B-126	B-145
	3610	368	29500	3010	0.87		2990	305	29500	3010	1.05	02 - 6175DA	- 3045	B-110	B-126	B-145
0.417	912	93.0	14700	1500	*1	0.503	912	93.0	14700	1500	*1	02 - 6130DA	- 3481	B-109	B-125	B-144
	1050	107	14700	1500	*1		1050	107	14700	1500	*1	02 - 6135DA	- 3481	B-109	B-125	B-144
0.417	1230	125	16000	1630	*1	0.503	1230	125	16000	1630	*1	02 - 6140DA	- 3481	B-109	B-125	B-144
	1370	140	16000	1630	*1		1370	140	16000	1630	*1	02 - 6145DA	- 3481	B-109	B-125	B-144
0.417	1760	179	22100	2250	*1	0.503	1760	179	22100	2250	*1	02 - 6160DA	- 3481	B-110	B-126	B-145
	2100	214	22100	2250	*1		2100	214	22100	2250	*1	02 - 6165DA	- 3481	B-110	B-126	B-145
0.417	2530	258	29500	3010	*1	0.503	2530	258	29500	3010	*1	02 - 6170DA	- 3481	B-110	B-126	B-145
	3150	321	29500	3010	*1		3150	321	29500	3010	*1	02 - 6175DA	- 3481	B-110	B-126	B-145

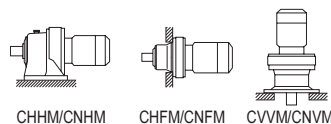


GEARMOTORS

Selection Tables
0.2 kW

1. Combinations in **bold** are the recommended models for operations for 10 hours/day with uniform load (service factor is about 1.0 for motor rating at 50Hz).
2. Motor slippage may affect n₁ and n₂. Refer to technical data for details.
3. CNHM, CHHM, CNFM, CHFM, CNVM, and CVVM indicate types. Refer to page B-10 for details.
4. Lubrication method is different for each model. Refer to "Lubrication" section in page F-4~F-5 for details.
5. "6" at the end of "input capacity symbol" indicates models with 6P motor. Other models come with 4P motor.

Selection Tables Gearmotors #CNHM02, #CHHM02, #CNVM02, #CVVM02



0.2 kW	Hz		50Hz		60Hz	
	P		4	6	4	6
	n ₁	r/min	1450	980	1750	1165

n₁: Motor Speed

50Hz					60Hz					Nomenclature			Page of Dimension Sheet			
Output Speed n ₂ r/min	Output Torque Tout		Allowable Radial Load Pro		SF	Output Speed n ₂ r/min	Output Torque Tout		Allowable Radial Load Pro		Input Capacity Symbol	Frame Size	Reduction Ratio	CNHM	CNFM	CNVM
	N-m	kgf-m	N	kgf			N-m	kgf-m	N	kgf						
0.327	848	86.5	14700	1500	*1	0.394	848	86.5	14700	1500	*1	02 - 6130DA	- 4437	B-109	B-125	B-144
	979	99.8	14700	1500	*1		979	99.8	14700	1500	*1	02 - 6135DA	- 4437	B-109	B-125	B-144
	1230	125	16000	1630	*1		1230	125	16000	1630	*1	02 - 6140DA	- 4437	B-109	B-125	B-144
	1250	127	16000	1630	*1		1250	127	16000	1630	*1	02 - 6145DA	- 4437	B-109	B-125	B-144
	1760	179	22100	2250	*1		1760	179	22100	2250	*1	02 - 6160DA	- 4437	B-110	B-126	B-145
	2050	209	21800	2220	*1		2050	209	21800	2220	*1	02 - 6165DA	- 4437	B-110	B-126	B-145
	2530	258	29500	3010	*1		2530	258	29500	3010	*1	02 - 6170DA	- 4437	B-110	B-126	B-145
3150	321	29500	3010	*1	3150	321	29500	3010	*1	02 - 6175DA	- 4437	B-110	B-126	B-145		
0.282	848	86.5	14700	1500	*1	0.341	848	86.5	14700	1500	*1	02 - 6130DA	- 5133	B-109	B-125	B-144
	979	99.8	14700	1500	*1		979	99.8	14700	1500	*1	02 - 6135DA	- 5133	B-109	B-125	B-144
	1230	125	16000	1630	*1		1230	125	16000	1630	*1	02 - 6140DA	- 5133	B-109	B-125	B-144
	1250	127	16000	1630	*1		1250	127	16000	1630	*1	02 - 6145DA	- 5133	B-109	B-125	B-144
	1760	179	22100	2250	*1		1760	179	22100	2250	*1	02 - 6160DA	- 5133	B-110	B-126	B-145
	2050	209	21800	2220	*1		2050	209	21800	2220	*1	02 - 6165DA	- 5133	B-110	B-126	B-145
	2530	258	29500	3010	*1		2530	258	29500	3010	*1	02 - 6170DA	- 5133	B-110	B-126	B-145
3150	321	29500	3010	*1	3150	321	29500	3010	*1	02 - 6175DA	- 5133	B-110	B-126	B-145		
0.235	848	86.5	14700	1500	*1	0.283	848	86.5	14700	1500	*1	02 - 6130DB	- 6177	B-109	B-125	B-143
	979	99.8	14700	1500	*1		979	99.8	14700	1500	*1	02 - 6135DB	- 6177	B-109	B-125	B-144
	1230	125	16000	1630	*1		1230	125	16000	1630	*1	02 - 6140DB	- 6177	B-109	B-125	B-144
	1250	127	16000	1630	*1		1250	127	16000	1630	*1	02 - 6145DB	- 6177	B-109	B-125	B-144
	1760	179	22100	2250	*1		1760	179	22100	2250	*1	02 - 6160DA	- 6177	B-110	B-126	B-145
	2050	209	21800	2220	*1		2050	209	21800	2220	*1	02 - 6165DA	- 6177	B-110	B-126	B-145
	2530	258	29500	3010	*1		2530	258	29500	3010	*1	02 - 6170DA	- 6177	B-110	B-126	B-145
3150	321	29500	3010	*1	3150	321	29500	3010	*1	02 - 6175DA	- 6177	B-110	B-126	B-145		
0.192	848	86.5	14700	1500	*1	0.231	848	86.5	14700	1500	*1	02 - 6130DB	- 7569	B-109	B-125	B-143
	979	99.8	14700	1500	*1		979	99.8	14700	1500	*1	02 - 6135DB	- 7569	B-109	B-125	B-144
	1230	125	16000	1630	*1		1230	125	16000	1630	*1	02 - 6140DB	- 7569	B-109	B-125	B-144
	1250	127	16000	1630	*1		1250	127	16000	1630	*1	02 - 6145DB	- 7569	B-109	B-125	B-144
	1760	179	22100	2250	*1		1760	179	22100	2250	*1	02 - 6160DA	- 7569	B-110	B-126	B-145
	2050	209	21800	2220	*1		2050	209	21800	2220	*1	02 - 6165DA	- 7569	B-110	B-126	B-145
	2530	258	29500	3010	*1		2530	258	29500	3010	*1	02 - 6170DA	- 7569	B-110	B-126	B-145
3150	321	29500	3010	*1	3150	321	29500	3010	*1	02 - 6175DA	- 7569	B-110	B-126	B-145		

GEARMOTORS

Selection Tables
0.2 kW

- "*2" indicate models manufactured with reducer and motor separately mounted on a common baseplate (horizontal shaft direction) or on an adaptor (vertical shaft direction). Consult us for details, including dimensions.
- Allowable radial load (Pro) is the value at the midpoint of the slow speed shaft.
- "*3" indicate models with reduction ratios equal to nominal ratio. Refer to Table A-3 "6000SK Series (Actual Reduction Ratio)" on page A-4 for actual reduction ratio. Indicated reduction ratio is the same as actual reduction ratio for other models.
- Maintain torque load during operation within "Output torque" in the table for models with "*" in the SF column. They cannot be operated with 100% motor rating.